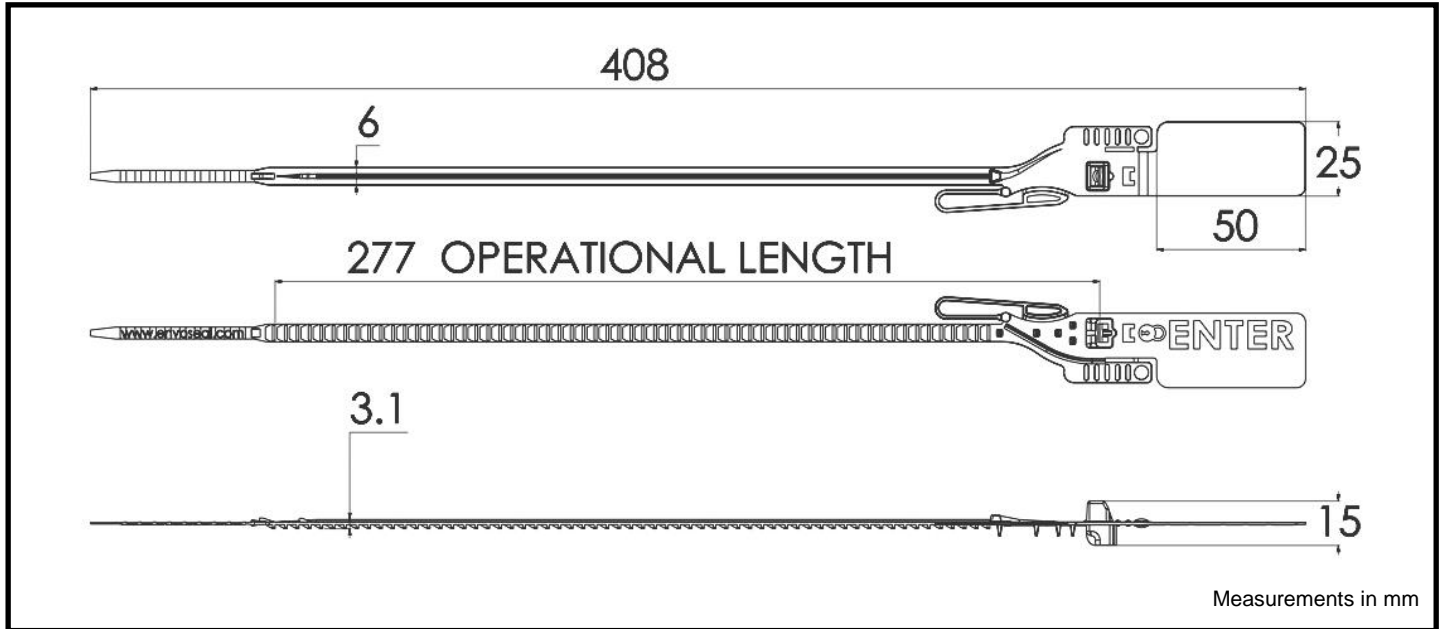


# GRIPSEAL



## FEATURES

- Light and 30% easier to pull up than other models
- New “easy grip” tear line and “easy feed” label holder
- Centralised locking chamber for more efficient packing
- Chamber holds multiple teeth to eliminate “wriggle”
- Large print area for logos and barcoding
- Tail keeper holds each tooth with no reverse slipping

## SPECIFICATION

### Materials:

*GripSeal*: Polypropylene

### Pull Strength (average):

*Tensile strength*: approx. 270N (equivalent to ~27kg)

### Recommended Operational Temperature Range\*:

*GripSeal*: 0°C to +50°C

(NB: all material is increasingly brittle with decreasing temp.)

### Minimum hole size for tail to pass through:

6mm diameter hole or 6mm x 3.1mm slot

### Laser mark available on flag only

### Stock Versions:

All colours are pastel for laser printing  
White, Yellow, Blue & Green

### Packaging:

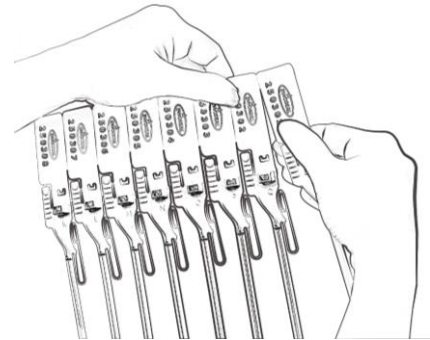
#### Per Box

1,000, Mats of 10, 415mm x 260mm x 445mm, 6kg

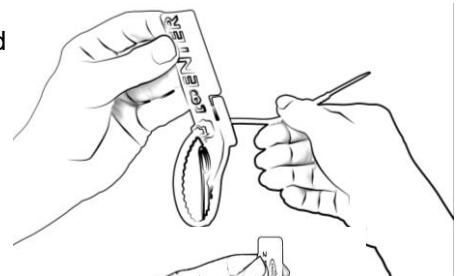
#### Per Pallet

40,000, 120cm x 100cm x 195cm, 265kg

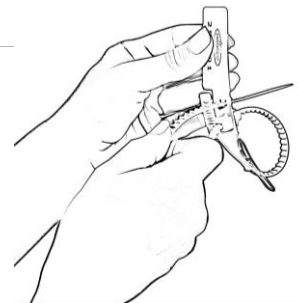
1. To avoid breaking the tearline, remove by holding and pulling from the lower part of the flag to the top.



2. Loop tail around item to be sealed (teeth facing inwards). Pull tail through the chamber from the side that says 'ENTER'. Pull up tight by hand.



3. Excess tail can be tucked into 'tail keeper' slot.



4. To remove seal, grip tearline handle firmly and pull towards you





## CUSTOMISATION

All customisation available upon request only for orders above:

All custom versions: 25,000

### Custom Versions:

With Tearline

### Custom Marking:

All custom versions: Laser marked logo and number  
Bar-coding possible  
Laser mark area 45mm x 20mm

### Custom Colours:

All custom versions: choice of colours

## APPLICATIONS

- Mail sacks
- Property bags
- Roll cages
- Boxes

## TYPICAL RAW MATERIAL SAFETY AND PROPERTIES

	<b>Polypropylene</b>
<b>Health &amp; Safety</b>	The material is not hazardous. However, care should be taken when applying and removing a seal.
<b>Storage &amp; handling</b>	Keep in secure, dry & well ventilated place at room temperature and protect from contamination.
<b>Disposal of used seals</b>	This product is not bio-degradable. It should be recycled or otherwise disposed of in compliance with local authority regulations.
<b>Flammability</b>	UL 94: HB
<b>In case of fire</b>	Fires can be extinguished by conventional means with water spray preferred.
<b>Melting point</b>	Polypropylene will melt at approx. 150 degrees centigrade.

All values are typical values as published and are for guidance only. ITW Envopak reserves the right to alter these specifications without notice. The above safety information has been extracted from material safety data sheets supplied by our raw material suppliers. No liability is taken by ITW Envopak for the accuracy of this information.

\*Recommended operational temperature range is a guide only. The seal can withstand more extreme temperatures depending on conditions. For temperatures outside the recommended range seals should first be tested in the specific application by the customer.